



**Statistics March 2024:  
Returns from Norway**

**The police forcibly returned 217 persons in March 2024, 59 of whom were convicted offenders.**

The National Police Immigration Service (NPIS) is responsible for executing, coordinating and assuring the quality of all returns of foreigners staying illegally in Norway. The respective police districts are responsible for returns following refusal of entry or stay, while the NPIS is responsible for returning persons who have had their asylum applications rejected and returns under the Dublin procedure or to safe third countries. The Norwegian Directorate of Immigration (NDI) is responsible for assisted returns, previously called voluntary returns. Assisted returns are not included in these statistics.

**Compared with 2023**

	<b>Forced returns</b>
As at 31 March 2023	651
As at 31 March 2024	554
Change in percent	<b>-15</b>

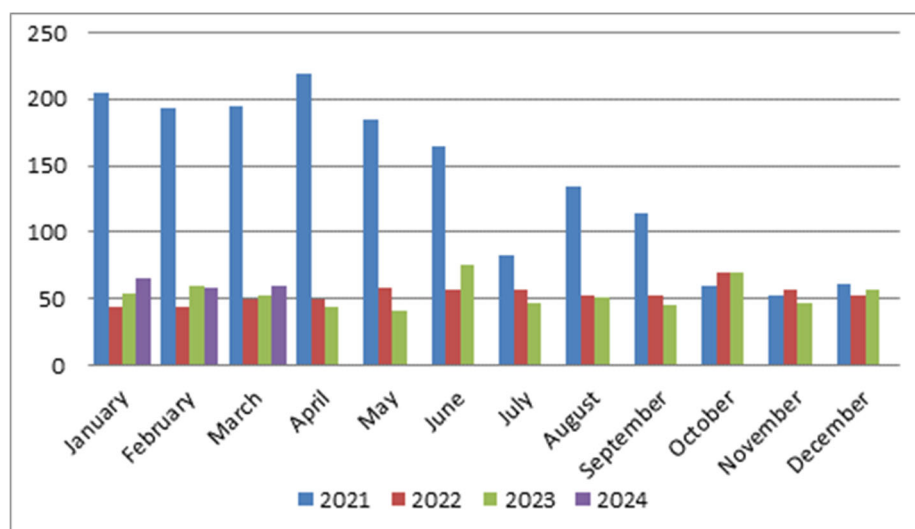
*These figures may change due to delays in the registration process.*

**Convicted offenders**

In March, the police returned 59 convicted offenders, 27% of all returnees that month. In comparison, 58 convicted offenders, or 38% of all returnees that month, were returned in February. The decline in the percentage of convicted returnees is due to the number of returnees in the categories asylum and Dublin returns being higher in March and the percentage of convicted returnees being very low.

So far in 2024, 183 convicted offenders have been returned, compared with 166 in the same period in last year.

Below are statistics for the last four years:



*Convicted offenders returned over the last four years*

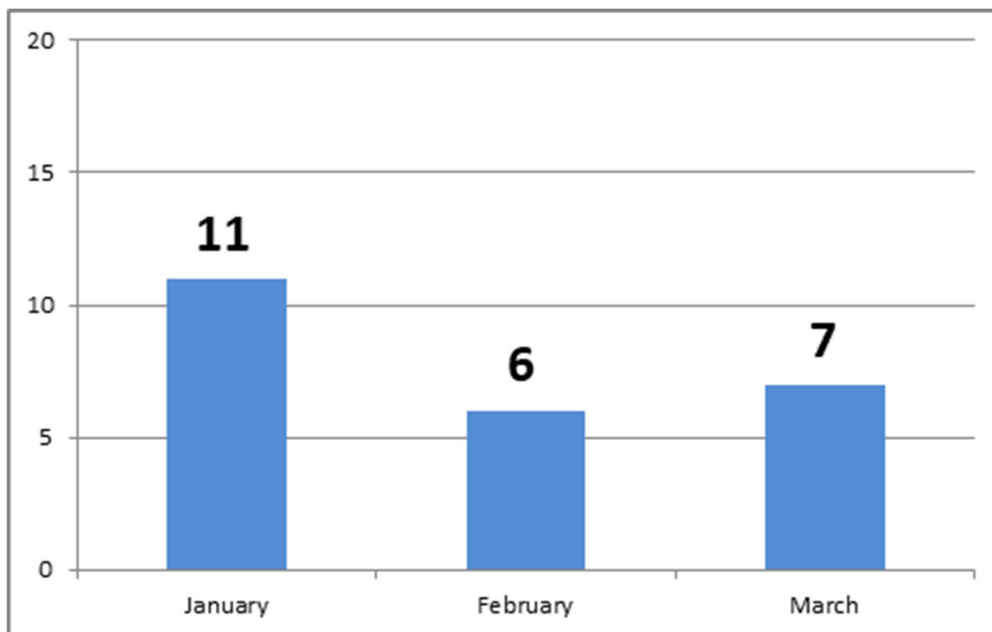
The most common nationalities among convicted returnees so far in 2024 are Romanian (18%), Lithuanian (13%) and Polish (9%).

### **Minors**

A total of 17 minors were returned in March, either to their home country or to a safe third country. All travelled with their parents or guardians.

As a rule, Norwegian authorities do not attempt to verify the age of unaccompanied minors when they are to be returned to another European country under the Dublin III Regulation.

All returned unaccompanied minors must be met by either family members or others who will care for them, e.g. representatives of relevant institutions or the child welfare services in the country in question.



*Returned minors so far in 2024*

### **Returns on chartered flights**

No chartered return flights have taken place so far this year.

### **The various returnee categories**

The police return persons who have no legal right to stay in Norway, i.e. not only persons who have had their application for asylum and any appeals rejected.

- 1) **Asylum**– all persons who have applied for protection (asylum) in Norway and who have had their application processed and rejected in Norway and who have exhausted all avenues of appeal. This category also includes persons subject to an expulsion order.
- 2) **Dublin** – anyone returned under the Dublin Regulation. This also includes persons subject to an expulsion order. The Dublin Regulation applies in the EU, Iceland, Liechtenstein, Switzerland and Norway. The Regulation governs, inter alia, which member state will process any given asylum application. The purpose of the Regulation is to prevent asylum seekers from applying in multiple countries, but also to ensure that one of the countries assumes responsibility for the asylum seeker. The statistics include both returns under the Dublin Regulation and returns to "safe third

countries". The latter are cases where the asylum applicant already has a residence permit (refugee status or other form of permit) in a country that is considered safe.

- 3) **Refused entry or stay** – persons who have been refused entry or stay as they are not permitted to stay here. This may be for various reasons, but persons who are refused entry or stay are not banned from Norway after being returned.
- 4) **Expelled** – anyone expelled from Norway who has not applied for protection (asylum) or who is not subject to the Dublin Regulation. Most of those who fall into this category have been expelled due to a criminal conviction and are banned from Norway for a specific period of time. Violation of the re-entry ban is a punishable offence.
- 5) **Other** – persons not covered by any of the other categories.

<b>Returnees so far in 2024 by nationality</b>					
	<b>Asylum</b>	<b>Refused stay or entry</b>	<b>Dublin</b>	<b>Expulsion</b>	<b>Total</b>
Afghanistan	1	2	5	3	<b>11</b>
Albania	1	3		4	<b>8</b>
Algeria		3	2	1	<b>6</b>
Argentina		2		3	<b>5</b>
Armenia	3			1	<b>4</b>
Azerbaijan		1	3	1	<b>5</b>
Australia		1		1	<b>2</b>
Belarus		2		1	<b>3</b>
Belgium				1	<b>1</b>
Botswana		2			<b>2</b>
Brazil		3		7	<b>10</b>
Canada	3			4	<b>7</b>
Chile				2	<b>2</b>
Colombia	4	2		5	<b>11</b>
Cuba		1			<b>1</b>
Denmark				1	<b>1</b>
Egypt		1	1		<b>2</b>
Ivory Coast		1			<b>1</b>
Eritrea		2	3		<b>5</b>
Ethiopia		1	1		<b>2</b>
The Philippines		1		2	<b>3</b>
Finland				1	<b>1</b>
France				2	<b>2</b>
The Gambia		1			<b>1</b>
Georgia	4	2		2	<b>8</b>
Ghana	1	1		2	<b>4</b>
Guinea			1		<b>1</b>
India		2		1	<b>3</b>
Iraq	7	1	6	1	<b>15</b>

<b>Returnees so far in 2024 by nationality</b>					
	<b>Asylum</b>	<b>Refused stay or entry</b>	<b>Dublin</b>	<b>Expulsion</b>	<b>Total</b>
Iran	4	3	1	1	<b>9</b>
Iceland				1	<b>1</b>
Japan		1		1	<b>2</b>
Kazakhstan			3		<b>3</b>
China		11	1	10	<b>22</b>
Democratic Republic of the Congo - Kinshasa		1		1	<b>2</b>
Kosovo	5	1		3	<b>9</b>
Croatia		1			<b>1</b>
Kuwait				1	<b>1</b>
Latvia				1	<b>1</b>
Lebanon			1		<b>1</b>
Libya		1	6		<b>7</b>
Lithuania		2		22	<b>24</b>
Malaysia		1		1	<b>2</b>
Mali			1		<b>1</b>
Morocco			2	2	<b>4</b>
Mexico		1		1	<b>2</b>
Moldova	1			1	<b>2</b>
Mongolia				1	<b>1</b>
Montenegro				1	<b>1</b>
Myanmar			4		<b>4</b>
Nederland		1		4	<b>5</b>
Nepal		6			<b>6</b>
Nigeria		2			<b>2</b>
North Macedonia		1			<b>1</b>
Pakistan	1	2	2	3	<b>8</b>
Peru	2	3			<b>5</b>
Poland		6		11	<b>17</b>
Portugal		1			<b>1</b>
Romania		3		30	<b>33</b>
Russia		5	9		<b>14</b>
Rwanda			2		<b>2</b>
Senegal	1	1			<b>2</b>
Serbia	5	1		1	<b>7</b>
Singapore		1			<b>1</b>
Somalia	2		7	1	<b>10</b>
Spain				1	<b>1</b>
Sri Lanka				1	<b>1</b>
Stateless	2	1	2		<b>5</b>
United Kingdom		12		7	<b>19</b>
Sudan		1	2		<b>3</b>

<b>Returnees so far in 2024 by nationality</b>					
	<b>Asylum</b>	<b>Refused stay or entry</b>	<b>Dublin</b>	<b>Expulsion</b>	<b>Total</b>
Sweden		1		4	<b>5</b>
Syria	2	1	26	2	<b>31</b>
South Korea		1			<b>1</b>
Thailand				3	<b>3</b>
Chad			1		<b>1</b>
Czechia		1			<b>1</b>
Tunisia	2		1	1	<b>4</b>
Turkmenistan			1	1	<b>2</b>
Türkiye	2	1	7	4	<b>14</b>
Germany		1		3	<b>4</b>
Uganda				1	<b>1</b>
Ukraine	4	12	67		<b>83</b>
Hungary				2	<b>2</b>
USA	1	4		6	<b>11</b>
Uzbekistan			3	1	<b>4</b>
Venezuela	6	1		1	<b>8</b>
Vietnam		2		5	<b>7</b>
Zimbabwe				2	<b>2</b>
<b>Total</b>	<b>64</b>	<b>130</b>	<b>171</b>	<b>189</b>	<b>554</b>

<b>Returnees so far in 2024 by destination</b>					
	<b>Asylum</b>	<b>Refused stay or entry</b>	<b>Dublin</b>	<b>Expulsion</b>	<b>Total</b>
Afghanistan				1	<b>1</b>
Albania	1	3		4	<b>8</b>
Algeria		1		1	<b>2</b>
Argentina				2	<b>2</b>
Armenia	3				<b>3</b>
Azerbaijan		1		1	<b>2</b>
Australia				1	<b>1</b>
Belgium			1	1	<b>2</b>
Brazil		1		7	<b>8</b>
Bulgaria			1		<b>1</b>
Canada	3			3	<b>6</b>
Chile				2	<b>2</b>
Colombia	4	2		5	<b>11</b>
Cuba		1			<b>1</b>
Denmark		21	4	2	<b>27</b>
Estonia			1		<b>1</b>
The Philippines		1		2	<b>3</b>
Finland		2	1	1	<b>4</b>

## Returnees so far in 2024 by destination

	Asylum	Refused stay or entry	Dublin	Expulsion	Total
France		1	17	3	<b>21</b>
Georgia	3	2		2	<b>7</b>
Ghana				2	<b>2</b>
Greece	4	2	3		<b>9</b>
India		1		1	<b>2</b>
Iraq	7				<b>7</b>
Iran	4	1		1	<b>6</b>
Ireland		1			<b>1</b>
Iceland				1	<b>1</b>
Italy		1	2	1	<b>4</b>
Japan				1	<b>1</b>
China		7		8	<b>15</b>
Kosovo	5	1		4	<b>10</b>
Croatia		1	7		<b>8</b>
Kuwait				2	<b>2</b>
Latvia			1	1	<b>2</b>
Lithuania		2	2	24	<b>28</b>
Luxembourg			1		<b>1</b>
Malaysia		1		1	<b>2</b>
Malta			1		<b>1</b>
Morocco				2	<b>2</b>
Mexico		1		1	<b>2</b>
Moldova	1			1	<b>2</b>
Mongolia				1	<b>1</b>
Montenegro				1	<b>1</b>
Nederland		1	1	4	<b>6</b>
North Macedonia		1			<b>1</b>
Pakistan	1	1		2	<b>4</b>
Peru	2	3			<b>5</b>
Poland	2	12	50	12	<b>76</b>
Portugal		2	2	1	<b>5</b>
Romania		4		30	<b>34</b>
Russia		4			<b>4</b>
Senegal	1				<b>1</b>
Serbia	5	1			<b>6</b>
Singapore		1			<b>1</b>
Slovakia		1	1		<b>2</b>
Somalia	2			1	<b>3</b>
Spain	1	2	12	2	<b>17</b>
United Kingdom		16		10	<b>26</b>
Switzerland			6		<b>6</b>
Sweden	2	11	16	8	<b>37</b>
Taiwan		1			<b>1</b>

<b>Returns so far in 2024 by destination</b>					
	<b>Asylum</b>	<b>Refused stay or entry</b>	<b>Dublin</b>	<b>Expulsion</b>	<b>Total</b>
Thailand				2	<b>2</b>
Czechia	1	2	1		<b>4</b>
Tunisia	2				<b>2</b>
Turkmenistan				1	<b>1</b>
Türkiye	2	2		5	<b>9</b>
Germany	1	4	36	6	<b>47</b>
Uganda				2	<b>2</b>
Hungary		2	2	3	<b>7</b>
USA	1	2		3	<b>6</b>
Uzbekistan				1	<b>1</b>
Venezuela	6	1			<b>7</b>
Vietnam				3	<b>3</b>
Zimbabwe				2	<b>2</b>
Austria		1	2		<b>3</b>
<b>Total</b>	<b>64</b>	<b>130</b>	<b>171</b>	<b>189</b>	<b>554</b>

By destination we mean the country the person is returned to, not necessarily the person's country of origin (or country of nationality).