



**Statistics for November 2024:
Forced returns from Norway**

The police forcibly returned 201 persons in November 2024, 58 of whom were convicted offenders.

The National Police Immigration Service (NPIS) is responsible for executing, coordinating and assuring the quality of all returns of foreigners staying illegally in Norway. The respective police districts are responsible for returns following refusal of entry or stay, while the NPIS is responsible for returning persons who have had their asylum applications rejected or who are returned under the Dublin procedure or to safe third countries. The Norwegian Directorate of Immigration (NDI) is responsible for assisted returns, previously called voluntary returns. Assisted returns are not included in these statistics.

Compared with 2023

	Forced returns
As at 30 November 2023	2151
As at 30 November 2024	2300
Change in percent	7%

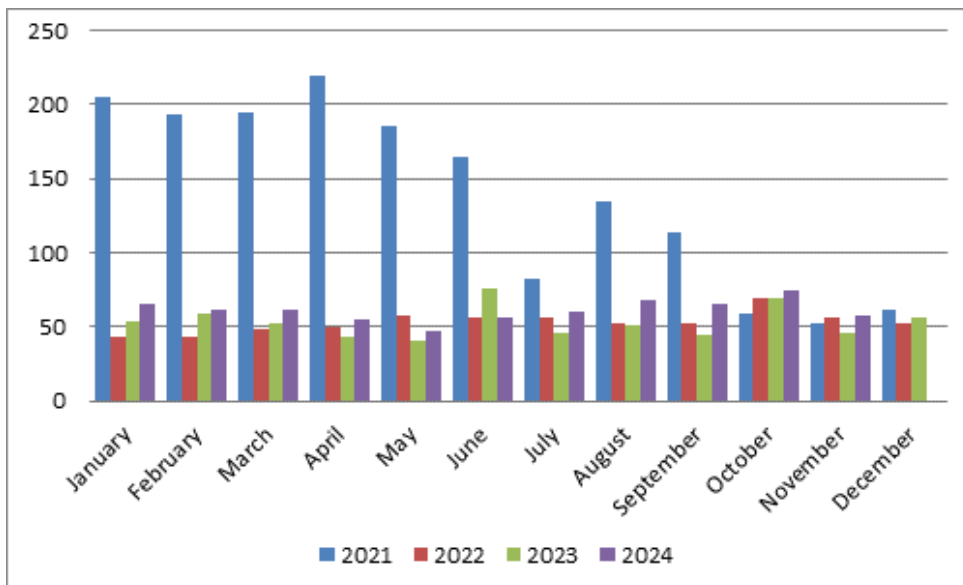
These figures may change due to delays in the registration process.

Convicted offenders

In November, the police returned 58 convicted offenders, approx. 29% of all returnees that month.

So far this year, 674 convicted offenders have been returned, compared with 584 in the same period last year.

Below are statistics for the last four years:



Convicted offenders returned over the last four years

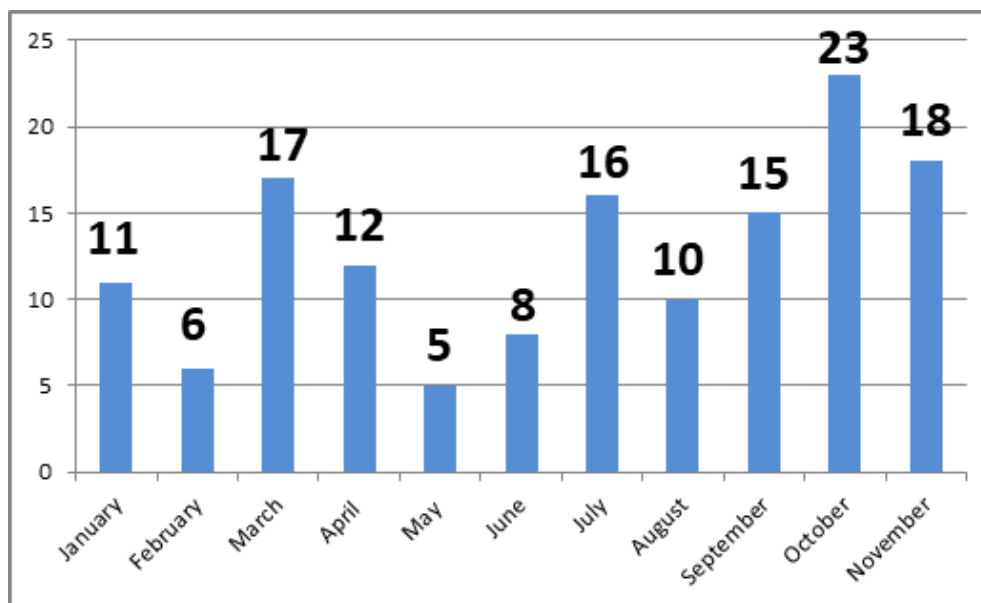
The most common nationalities among convicted returnees so far this year are Romanian (18%), Lithuanian (10%) and Polish (9%).

Minors

A total of 18 minors were returned in November, either to their home country or to a safe third country. One was an unaccompanied minor, while 17 travelled with their parents or another family member.

As a rule, Norwegian authorities do not attempt to verify the age of unaccompanied minors when they are to be returned to another European country under the Dublin III Regulation.

All returned unaccompanied minors must be met by either family members or others who will care for them, e.g. representatives of relevant institutions or the child welfare services in the country in question.



Returned minors so far this year

Returns on chartered flights

No returnee flights were chartered in November. So far this year, there have been four chartered returnee flights.

The various returnee categories

The police return persons who have no legal right to stay in Norway, i.e. not only persons who have had their application for asylum and any appeals rejected.

- 1) **Asylum** – all persons who have applied for protection (asylum) in Norway and who have had their application processed and rejected in Norway and have exhausted all avenues of appeal. This category also includes persons subject to an expulsion order.
- 2) **Dublin** – anyone returned under the Dublin Regulation. This also includes persons subject to an expulsion order. The Dublin Regulation applies in the EU, Iceland, Liechtenstein, Switzerland and Norway. The Regulation governs, inter alia, which member state will process any given asylum application. The purpose of the Regulation is to prevent asylum seekers from applying in multiple countries, but also to ensure that one of the countries assumes responsibility for the asylum seeker.

- 3) **International protection** – Returns of third-country nationals granted international protection (IP) in another Schengen country. Previously categorised as ‘Dublin’ returns, IP cases will henceforth be treated as a separate category, as they are not processed under the Dublin Regulation.
- 4) **Refused entry or stay** – persons who have been refused entry or stay as they are not permitted to stay here. This may be for various reasons, but persons who are refused entry or stay are not banned from Norway after their return.
- 5) **Expelled** – anyone expelled from Norway who has not applied for protection (asylum) or who is not subject to the Dublin Regulation. Most of those who fall into this category have been expelled due to a criminal conviction and are banned from Norway for a specific period of time. Violation of the re-entry ban is a punishable offence.

Returnees so far this year by nationality						
	Asylum	Dublin	Granted international protection	Refused stay or entry	Expulsion	Total
Afghanistan	1	20	7	6	8	42
Albania	8			10	34	52
Algeria	5	7		3	3	18
Argentina	4			3	4	11
Armenia	8			1	4	13
Azerbaijan		6		4	3	13
Australia				3	3	6
Bangladesh				1	2	3
Belarus		2	1	6	2	11
Belgium					2	2
Bolivia				2	1	3
Bosnia-Herzegovina	6				1	7
Botswana				2		2
Brazil				7	15	22
Bulgaria					4	4
Canada	5				13	18
Chile				3	8	11
Colombia	18	1		37	17	73
Costa Rica	2				1	3
Cuba				2		2
Denmark				1	2	3
Dominican Republic				6		6
Djibouti		1		1	1	3
Dominica				1		1
Ecuador		4				4
Egypt		4		2	2	8
Ivory Coast	1			1		2
Eritrea	2	22	6	4		34
Estonia					4	4

Returnees so far this year by nationality

	Asylum	Dublin	Granted international protection	Refused stay or entry	Expulsion	Total
Ethiopia	12	5	1	2	5	25
The Philippines				2	11	13
Finland				1	3	4
France					4	4
The Gambia				2	4	6
Georgia	11			6	11	28
Ghana	1		1	5	5	12
Guatemala	2				1	3
Guinea		3	2			5
Haiti				1		1
India	2	6		29	5	42
Indonesia		1		1	1	3
Iraq	20	16	1	2	12	51
Iran	7	17	3	7	9	43
Iceland					1	1
Israel		1		3	3	7
Italy				2	1	3
Japan				4	2	6
Yemen	1	2				3
Jordan	1	1			3	5
Cameroon		3				3
Cape Verde				1		1
Kazakhstan		3		2	1	6
Kenya		2		2	1	5
China	3	10		23	22	58
Democratic Republic of the Congo - Kinshasa		7		1	2	10
Kosovo	22			15	11	48
Croatia				1	4	5
Kuwait					1	1
Latvia					8	8
Lebanon	1	6				7
Liberia		1				1
Libya	8	9	1	1		19
Lithuania				4	66	70
Madagascar					1	1
Malawi					1	1
Malaysia				3	2	5
Mali		1	1	1		3
Morocco		5		4	5	14
Mauritania					1	1
Mexico				4	4	8
Moldova	1			5	3	9
Mongolia					4	4

Returnees so far this year by nationality

	Asylum	Dublin	Granted international protection	Refused stay or entry	Expulsion	Total
Montenegro					3	3
Myanmar		7				7
Namibia				1		1
The Netherlands				2	8	10
Nepal				9		9
New Zealand					1	1
Niger		1		1		2
Nigeria	3	3		6	3	15
North Macedonia	3			5	3	11
Pakistan	2	2		12	6	22
Palestine		14	6		2	22
Peru	3			3		6
Poland				15	49	64
Portugal				1	2	3
Romania				12	111	123
Russia		43		114	9	166
Rwanda		4				4
Saint Kitts and Nevis					1	1
Saint Vincent and the Grenadines				1		1
Saudi Arabia		3		2		5
Senegal	1	3		1		5
Serbia	7			8	3	18
Sierra Leone		2			1	3
Singapore				1	1	2
Slovakia				2	2	4
Somalia	2	13	4	2	8	29
Spain				3	4	7
Sri Lanka		1		2	2	5
Stateless	3	20	13	2	5	43
United Kingdom	2			51	29	82
Sudan		8	2	1		11
Switzerland					1	1
Sweden				1	16	17
Syria		67	39	12	10	128
South Africa				3	1	4
South Korea				1		1
South Sudan			1			1
Tajikistan		3		1		4
Tanzania		1				1
Thailand				5	4	9
Togo		1				1

Returnees so far this year by nationality						
	Asylum	Dublin	Granted international protection	Refused stay or entry	Expulsion	Total
Trinidad and Tobago					1	1
Chad		1				1
The Czech Republic				2		2
Tunisia	3	3		2	2	10
Turkmenistan		3			1	4
Türkiye	9	30	2	9	13	63
Germany				4	12	16
Uganda					1	1
Unknown					1	1
Ukraine	3	277	6	26	5	317
Hungary				1	2	3
USA	4			17	20	41
Uzbekistan		5		1	1	7
Venezuela	16			4	2	22
Vietnam				7	14	21
Zimbabwe		1		1	2	4
Total	213	682	97	594	714	2300

Returnees so far this year by destination						
	Asylum	Dublin	Granted international protection	Refused stay or entry	Expulsion	Total
Afghanistan	1				2	3
Albania	8			13	31	52
Algeria	5			1	1	7
Argentina	1				3	4
Armenia	9				5	14
Azerbaijan				1	2	3
Australia				1	3	4
Bangladesh					1	1
Belarus					1	1
Belgium		6			2	8
Bolivia					1	1
Bosnia-Herzegovina	6				1	7
Brazil				4	14	18
Bulgaria		9	6		4	19
Canada	6			1	12	19
Chile	2			1	7	10
Colombia	19			35	14	68

Returnees so far this year by destination

	Asylum	Dublin	Granted international protection	Refused stay or entry	Expulsion	Total
Costa Rica	2				1	3
Cuba				2		2
Denmark		16	1	38	7	62
United Arab Emirates				6	1	7
Dominican Republic				2		2
Djibouti					1	1
Egypt					2	2
Eritrea	1					1
Estonia		4	3	1	4	12
Ethiopia	13				4	17
The Philippines				1	9	10
Finland		12		6	4	22
France		66	3	1	5	75
Faroe Islands				1		1
The Gambia					4	4
Georgia	10			4	11	25
Ghana	1			4	5	10
Guatemala	2				1	3
Greece		1	43	5	5	54
Hong Kong				1	1	2
India	2			21	3	26
Indonesia					1	1
Iraq	21			1	5	27
Iran	7			2	6	15
Ireland		1		6		7
Iceland					1	1
Israel				1	2	3
Italy		1	5	6	5	17
Japan				1	2	3
Jordan	1				2	3
Kazakhstan				1		1
Kenya				2	1	3
China	3			12	17	32
Kosovo	22			9	13	44
Croatia		38		1	2	41
Kuwait					2	2
Cyprus			1	4		5
Latvia		3			10	13
Lebanon	1					1
Libya	7					7
Lithuania		12	1	6	69	88
Luxembourg		2				2
Madagascar					1	1

Returnees so far this year by destination

	Asylum	Dublin	Granted international protection	Refused stay or entry	Expulsion	Total
Malawi					1	1
Malaysia				3	2	5
Mali				1		1
Malta		3	1	3		7
Morocco					3	3
Mexico				3	4	7
Moldova	1			1	3	5
Mongolia					2	2
Montenegro					3	3
The Netherlands		14	5	4	11	34
New Zealand					1	1
Niger				1		1
Nigeria	3			2	3	8
North Macedonia	3			9	3	15
Pakistan	2			3	5	10
Peru	2			3		5
Poland	2	201	2	29	51	285
Portugal		3		2	5	10
Qatar				3		3
Romania		4	1	13	114	132
Russia				61	9	70
Saudi Arabia				1		1
Senegal	2					2
Serbia	7			8	3	18
Sierra Leone					1	1
Singapore				1	1	2
Slovakia		5		3	2	10
Slovenia				2		2
Somalia	2				5	7
Spain		57	5	15	12	89
Sri Lanka				2		2
United Kingdom	3			88	33	124
Svalbard and Jan Mayen				1		1
Switzerland		9		1	1	11
Sweden		58	5	17	38	118
South Africa				2	1	3
Taiwan				1		1
Thailand				2	2	4
Trinidad and Tobago					1	1
The Czech Republic	1	8		6		15
Tunisia	3				1	4
Turkmenistan					1	1

Returnees so far this year by destination						
	Asylum	Dublin	Granted international protection	Refused stay or entry	Expulsion	Total
Türkiye	12			54	17	83
Germany		130	11	13	23	177
Uganda					2	2
Hungary		7	1	7	3	18
Uruguay	1					1
USA	4			19	18	41
Uzbekistan					1	1
Venezuela	15			3	1	19
Vietnam				3	12	15
Zimbabwe					2	2
Austria		12	3	2	2	19
Total	213	682	97	594	714	2300

By destination we mean the country the person is returned to, not necessarily the person's country of origin (or country of nationality).