



**Statistics for October 2024:
Forced returns from Norway**

The police forcibly returned 202 persons in October 2024, 75 of whom were convicted offenders.

The National Police Immigration Service (NPIS) is responsible for executing, coordinating and assuring the quality of all returns of foreigners staying illegally in Norway. The respective police districts are responsible for returns following refusal of entry or stay, while the NPIS is responsible for returning persons who have had their asylum applications rejected or who are returned under the Dublin procedure or to safe third countries. The Norwegian Directorate of Immigration (NDI) is responsible for assisted returns, previously called voluntary returns. Assisted returns are not included in these statistics.

Compared with 2023

	Forced returns
As at 31 October 2023	1978
As at 31 October 2024	2094
Change in percent	6%

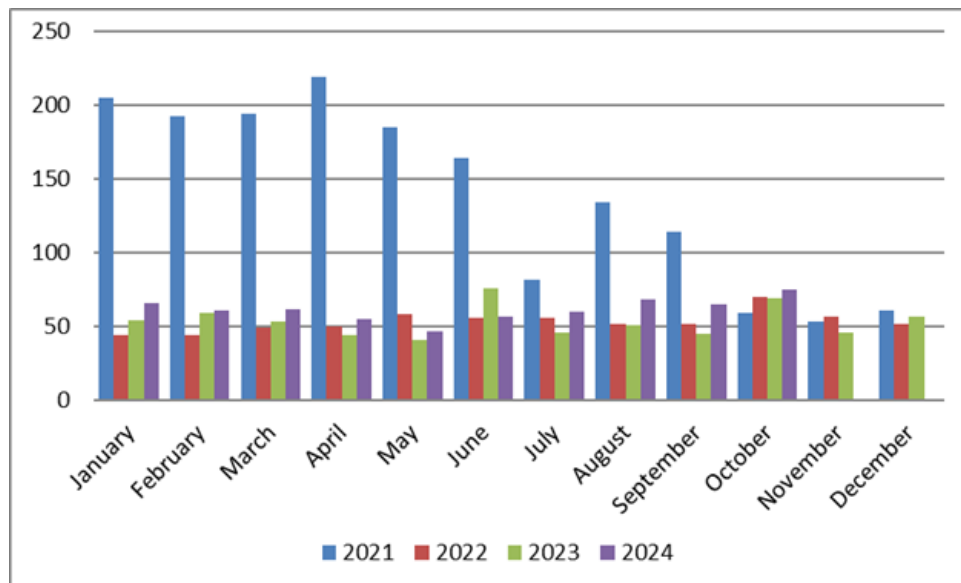
These figures may change due to delays in the registration process.

Convicted offenders

In October, the police returned 75 convicted offenders, approx. 37% of all returnees that month.

So far this year, 616 convicted offenders have been returned, compared with 542 in the same period last year.

Below are statistics for the last four years:



Convicted offenders returned over the last four years

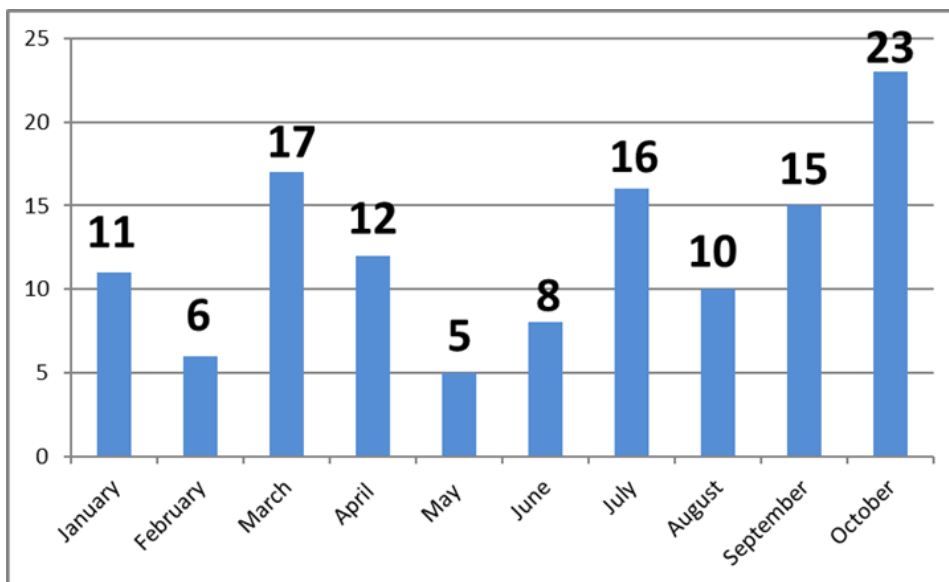
The most common nationalities among convicted returnees so far this year are Romanian (18%), Lithuanian (10%) and Polish (8%).

Minors

A total of 23 minors were returned in October, either to their home country or to a safe third country. All of them travelled with parents or other family members, with the exception of one child under the age of 15 with granted protection in Austria.

As a rule, Norwegian authorities do not attempt to verify the age of unaccompanied minors when they are to be returned to another European country under the Dublin III Regulation.

All returned unaccompanied minors must be met by either family members or others who will care for them, e.g. representatives of relevant institutions or the child welfare services in the country in question.



Returned minors so far this year

Returns on chartered flights

So far this year, four chartered return flights have taken place, one of them in October.

The various returnee categories

The police return persons who have no legal right to stay in Norway, i.e. not only persons who have had their application for asylum and any appeals rejected.

- 1) **Asylum** – all persons who have applied for protection (asylum) in Norway and who have had their application processed and rejected in Norway and have exhausted all avenues of appeal. This category also includes persons subject to an expulsion order.
- 2) **Dublin** – anyone returned under the Dublin Regulation. This also includes persons subject to an expulsion order. The Dublin Regulation applies in the EU, Iceland, Liechtenstein, Switzerland and Norway. The Regulation governs, inter alia, which member state will process any given asylum application. The purpose of the Regulation is to prevent asylum seekers from applying in multiple countries, but also to ensure that one of the countries assumes responsibility for the asylum seeker.

- 3) **International protection** – Returns of third-country nationals granted international protection (IP) in another Schengen country. Previously categorised as ‘Dublin’ returns, IP cases will henceforth be treated as a separate category, as they are not processed under the Dublin Regulation.
- 4) **Refused entry or stay** – persons who have been refused entry or stay as they are not permitted to stay here. This may be for various reasons, but persons who are refused entry or stay are not banned from Norway after their return.
- 5) **Expelled** – anyone expelled from Norway who has not applied for protection (asylum) or who is not subject to the Dublin Regulation. Most of those who fall into this category have been expelled due to a criminal conviction and are banned from Norway for a specific period of time. Violation of the re-entry ban is a punishable offence.

Returnees so far this year by nationality						
	Asylum	Dublin	Granted international protection	Refused stay or entry	Expulsion	Total
Afghanistan	1	17	7	6	8	39
Albania	7			7	30	44
Algeria	5	7		3	3	18
Argentina	2			3	4	9
Armenia	8			1	4	13
Azerbaijan		6		4	3	13
Australia				3	3	6
Bangladesh					1	1
Belarus		1	1	6	1	9
Belgium					1	1
Bolivia					1	1
Bosnia-Herzegovina	6				1	7
Botswana				2		2
Brazil				6	14	20
Bulgaria					4	4
Canada	5				11	16
Chile				2	8	10
Colombia	17	1		32	16	66
Costa Rica	2				1	3
Cuba				2		2
Denmark				1	2	3
Dominican Republic				4		4
Djibouti		1		1		2
Dominica				1		1
Ecuador		4				4
Egypt		3		1	2	6
Ivory Coast	1			1		2
Eritrea	2	21	4	4		31

Returnees so far this year by nationality

	Asylum	Dublin	Granted international protection	Refused stay or entry	Expulsion	Total
Estonia					4	4
Ethiopia	12	5	1	1	5	24
The Philippines				2	9	11
Finland				1	2	3
France					4	4
The Gambia				2	4	6
Georgia	9			6	11	26
Ghana	1		1	5	5	12
Guatemala	2				1	3
Guinea		3	2			5
Haiti				1		1
India	1	6		27	5	39
Indonesia		1		1	1	3
Iraq	18	16	1	2	11	48
Iran	6	16	3	7	9	41
Iceland					1	1
Israel		1		3	2	6
Italy				2	1	3
Japan				4	2	6
Yemen	1	2				3
Jordan	1	1			3	5
Cameroon		2				2
Cape Verde				1		1
Kazakhstan		3		2	1	6
Kenya		2		2	1	5
China		9		23	22	54
Democratic Republic of the Congo - Kinshasa		6		1	2	9
Kosovo	22			13	10	45
Croatia				1	4	5
Kuwait					1	1
Latvia					5	5
Lebanon	1	6				7
Liberia		1				1
Libya	1	9		1		11
Lithuania				4	61	65
Madagascar					1	1
Malaysia				2	2	4
Mali		1	1	1		3
Morocco		5		3	4	12
Mexico				4	4	8
Moldova	1			5	3	9
Mongolia					4	4
Montenegro					3	3

Returnees so far this year by nationality

	Asylum	Dublin	Granted international protection	Refused stay or entry	Expulsion	Total
Myanmar		5				5
Namibia				1		1
The Netherlands				1	8	9
Nepal				9		9
New Zealand					1	1
Niger		1		1		2
Nigeria	3	3		6	3	15
North Macedonia	3			5	3	11
Pakistan	2	2		12	6	22
Palestine		5	5			10
Peru	3			3		6
Poland				12	39	51
Portugal				1	2	3
Romania				10	105	115
Russia		37		105	8	150
Rwanda		4				4
Saint Kitts and Nevis					1	1
Saint Vincent and the Grenadines				1		1
Saudi Arabia		3		2		5
Senegal	1	2		1		4
Serbia	7			8	3	18
Sierra Leone		1			1	2
Singapore				1	1	2
Slovakia				2	2	4
Somalia	2	12	2	2	8	26
Spain				3	3	6
Sri Lanka		1		2	2	5
Stateless	3	20	12	2	4	41
United Kingdom	2			46	26	74
Sudan		8	2	1		11
Switzerland					1	1
Sweden				1	14	15
Syria		64	30	9	10	113
South Africa				3	1	4
South Korea				1		1
Tajikistan		3		1		4
Tanzania		1				1
Thailand				4	3	7
Togo		1				1
Trinidad and Tobago					1	1
Chad		1				1

Returnees so far this year by nationality						
	Asylum	Dublin	Granted international protection	Refused stay or entry	Expulsion	Total
The Czech Republic				1		1
Tunisia	2	3		2	2	9
Turkmenistan		2			1	3
Türkiye	8	28	1	9	11	57
Germany				3	12	15
Uganda					1	1
Unknown					1	1
Ukraine	3	262	6	24	5	300
Hungary				1	2	3
USA	4			14	19	37
Uzbekistan		5		1	1	7
Venezuela	16			4	2	22
Vietnam				6	14	20
Zimbabwe		1			2	3
Total	191	631	79	538	655	2094

Returnees so far this year by destination						
	Asylum	Dublin	Granted international protection	Refused stay or entry	Expulsion	Total
Afghanistan	1				2	3
Albania	7			10	27	44
Algeria	5			1	1	7
Argentina					3	3
Armenia	9				5	14
Azerbaijan				1	2	3
Australia				1	3	4
Belgium		6			1	7
Bolivia					1	1
Bosnia-Herzegovina	6				1	7
Brazil				3	14	17
Bulgaria		9	5		4	18
Canada	6			1	10	17
Chile	2				7	9
Colombia	18			30	14	62
Costa Rica	2				1	3
Cuba				2		2
Denmark		13	1	36	7	57
United Arab Emirates				6	1	7

Dominican Republic				2		2
Egypt					2	2
Eritrea	1					1
Estonia		4	3	1	4	12
Ethiopia	13				4	17
The Philippines				1	8	9
Finland		12		5	3	20
France		64	2	1	5	72
Faroe Islands				1		1
The Gambia					3	3
Georgia	8			4	11	23
Ghana	1			4	5	10
Guatemala	2				1	3
Greece			36	4	3	43
Hong Kong				1	1	2
India	1			19	3	23
Indonesia					1	1
Iraq	18			1	5	24
Iran	6			2	6	14
Ireland		1		4		5
Iceland					1	1
Israel				1	2	3
Italy			4	5	4	13
Japan				1	2	3
Jordan	1				2	3
Kazakhstan				1		1
Kenya				2	1	3
China				12	17	29
Kosovo	22			9	12	43
Croatia		32		1	2	35
Kuwait					2	2
Cyprus			1	4		5
Latvia		3			6	9
Lebanon	1					1
Lithuania		12	1	6	64	83
Luxembourg		2				2
Madagascar					1	1
Malaysia				2	2	4
Mali				1		1
Malta		3		3		6
Morocco					2	2
Mexico				3	4	7
Moldova	1			1	3	5
Mongolia					2	2
Montenegro					3	3
The Netherlands		11	5	3	11	30
New Zealand					1	1
Niger				1		1
Nigeria	3			2	3	8

North Macedonia	3			9	3	15
Pakistan	2			3	5	10
Peru	2			3		5
Poland	2	190	2	26	41	261
Portugal		3		2	4	9
Qatar				3		3
Romania		4	1	11	108	124
Russia				58	8	66
Saudi Arabia				1		1
Senegal	2					2
Serbia	7			8	3	18
Sierra Leone					1	1
Singapore				1	1	2
Slovakia		5		3	2	10
Somalia	2				5	7
Spain		47	2	13	9	71
Sri Lanka				2		2
United Kingdom	3			79	30	112
Svalbard and Jan Mayen				1		1
Switzerland		8		1	1	10
Sweden		55	4	16	35	110
South Africa				2	1	3
Taiwan				1		1
Thailand				2	2	4
Trinidad and Tobago					1	1
The Czech Republic	1	7		4		12
Tunisia	2				1	3
Turkmenistan					1	1
Türkiye	11			49	15	75
Germany		122	8	11	23	164
Uganda					2	2
Hungary		7	1	7	3	18
Uruguay	1					1
USA	4			16	17	37
Uzbekistan					1	1
Venezuela	15			3	1	19
Vietnam				2	12	14
Zimbabwe					2	2
Austria		11	3	2	1	17
Total	191	631	79	538	655	2094

By destination we mean the country the person is returned to, not necessarily the person's country of origin (or country of nationality).