



## Monthly statistics December 2014: Forced returns from Norway

**The National Police Immigration Service (NPIS) forcibly returned 532 persons in December 2014. 201 of these returnees had a criminal conviction in Norway.**

**In total in 2014, 7259 persons were forcibly returned, and 2810 of them were convicted offenders. This is an increase of 26 per cent compared with 2013.**

The NPIS is responsible for forcibly returning those who are not entitled to stay in Norway.

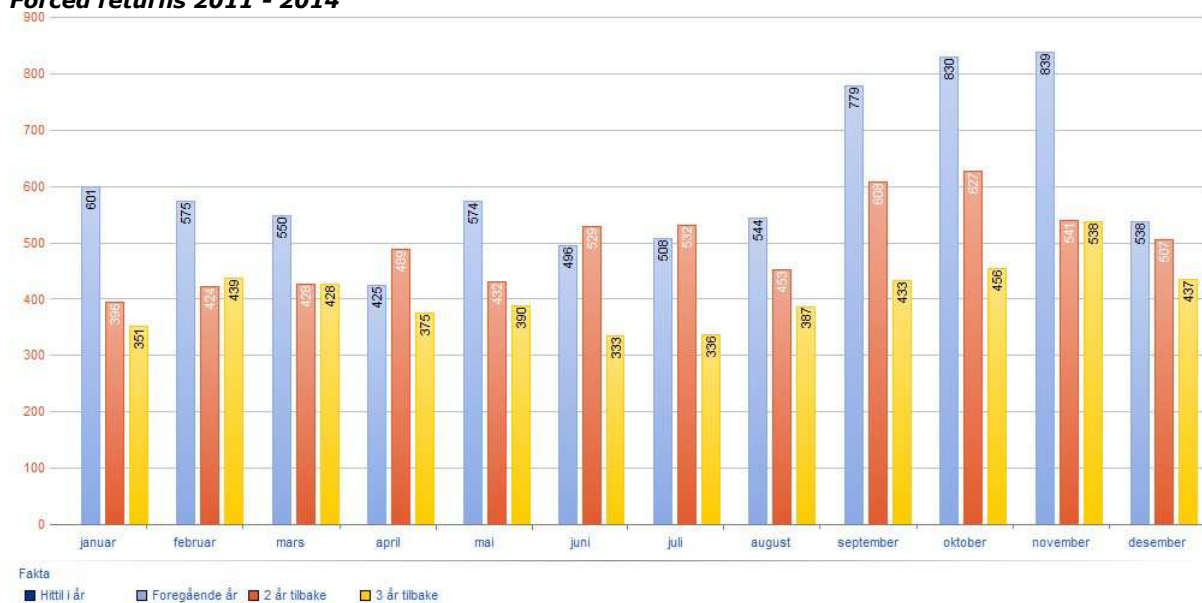
The Norwegian Directorate of Immigration (UDI) is responsible for assisted returns, previously called voluntary returns. Assisted returns are not included in these statistics.

### Compared with 2013:

	<b>Forced returns</b>
As of 31/12/2013	5966
As of 31/12/2014	7259
Change in percent	<b>22</b>

Delays in the registration process may mean that the real figure is higher.

### Forced returns 2011 - 2014



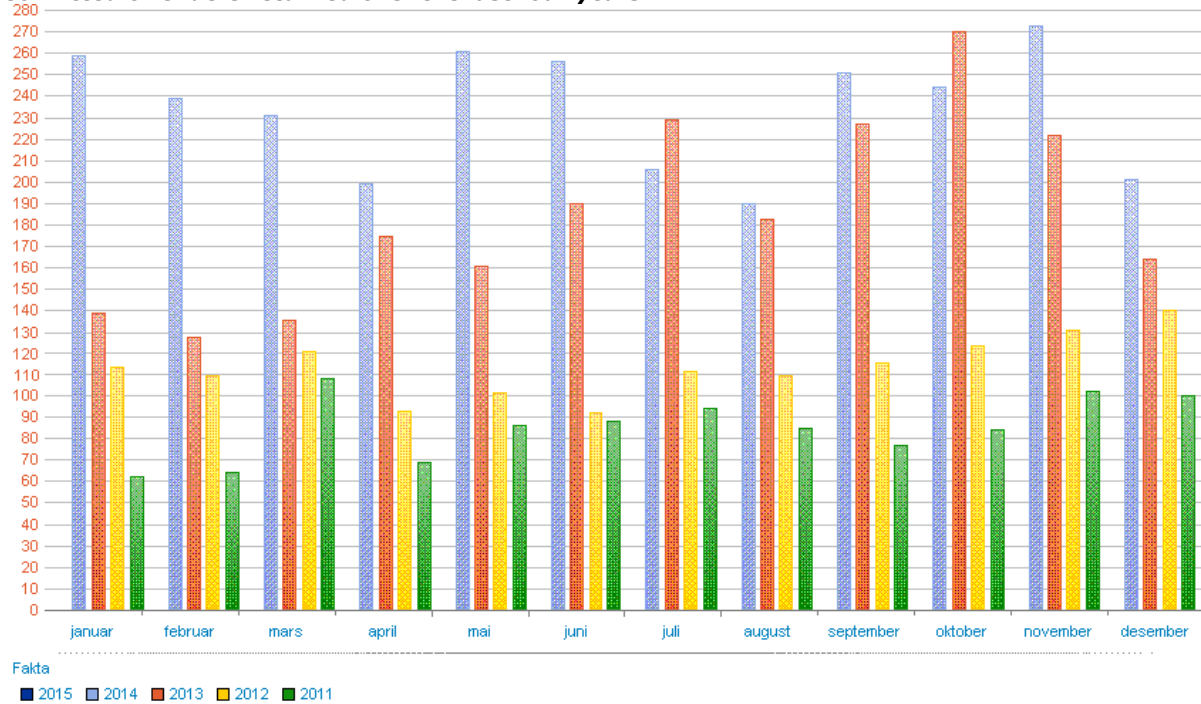
In this case, "Hittil i år" means the figures for 2014, "Foregående år" means the figures for 2013, "2 år tilbake" indicates 2012 figures, and "3 år tilbake" are the figures from 2011.

## Convicted offenders

In December, the police returned 201 convicted offenders. In total in 2014, 2810 convicted offenders were returned.

The most common nationalities among returned convicted offenders were citizens of Romania (16%), Nigeria (12%) and Poland (12%).

**Convicted offenders returned over the last four years**

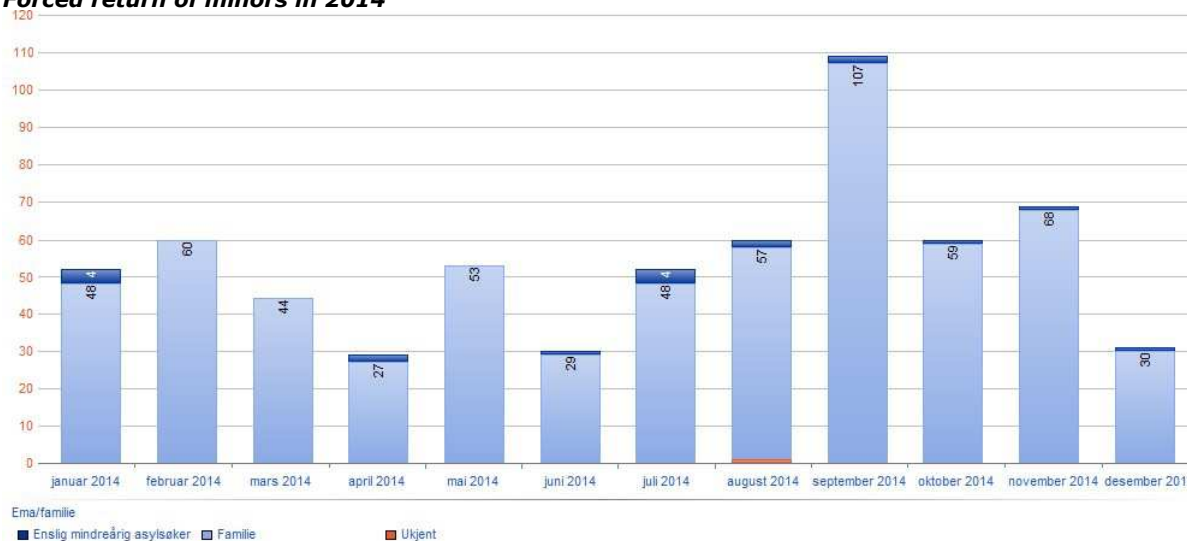


## Minors (under the age of 18)

The police returned 30 minors in December 2014, of which 29 out of 30 were accompanied by their parents.

A total of 649 minors were returned in 2014.

### Forced return of minors in 2014



As a rule, Norwegian authorities do not attempt to verify the age of unaccompanied minors when they are to be returned to another European country under the Dublin Regulation.

All returned unaccompanied minors must be met by either family members or others who will care for them, e.g. representatives of relevant institutions or the child welfare services in the country in question.

### Forced returns on chartered flights

Nine returnee flights were chartered in 2014, of which one in December.

### Returnees by destination and citizenship:

By destination we mean the country the person is returned to, not necessarily the person's home country (or country of nationality).

### The various returnee categories

NPIS returns persons who have no legal right to stay in Norway, i.e. not only persons who have had their application for asylum and any appeals rejected.

- 1) **Asylum** – anyone who has applied for protection (asylum) in Norway and who have had their application processed and rejected in Norway and who have exhausted all avenues of appeal. This category also includes persons subject to an expulsion order.
- 2) **Dublin** – anyone returned under the Dublin Regulation. It also includes persons subject to an expulsion order. The Dublin Regulation applies in the EU, Norway and Iceland, and governs where an application for asylum will be processed. The purpose of the Regulation is to prevent asylum seekers from applying in multiple countries, but also to ensure that one of the countries assumes responsibility for the asylum seeker.
- 3) **Refused entry** – persons who have been refused entry into Norway as they are not permitted to stay here. This may be for various reasons, but persons who are refused entry are not banned from Norway.
- 4) **Expelled** – anyone expelled from Norway who have not applied for protection (asylum) or who is not subject to the Dublin Regulation. Most of those who fall

into this category have been expelled due to a criminal conviction and are banned from Norway for a specific period of time. Violating the re-entry ban is a punishable offence.

5) **Other** – persons not covered by any of the other categories.

<b>Returnees by citizenship in 2014</b>						
	<b>Asylum</b>	<b>Dublin</b>	<b>Refused entry</b>	<b>Expelled</b>	<b>Other</b>	<b>Total</b>
Afghanistan	445	82	47	209	10	793
Albania	176		117	95	1	389
Algeria	13	74	4	15	1	107
Angola	15	5	2	1		23
Argentina			2	1		3
Armenia	19	7	1	3		30
Azerbaijan	13	6	1	4		24
Australia	1		2	4		7
Bangladesh	24	4	21	16		65
Belgium			2	2		4
Belize				1		1
Benin		1	1			2
Bolivia			1			1
Bosnia-Herzegovina	35		4	11		50
Brazil			6	9	1	16
Bulgaria	2	1	3	8		14
Burkina Faso		2		1		3
Burundi	19		1			20
Canada				3		3
Chile	1		2	8		11
People's Republic of China	2	9	5			16
Colombia			6	3		9
Democratic Republic of the Congo (Kinshasa)	11	1				12
Cuba	2	3		3		8
Denmark			2	4		6
Djibouti	1	5				6
Dominican Republic			1	2		3
Ecuador			2	1		3
Egypt	9	12	23	13	1	58
Ivory Coast	1	8	3			12
Eritrea	3	154	17	6		180
Estonia	1			16	1	18
Ethiopia		43	3	2		48

## Returnees by citizenship in 2014

	Asylum	Dublin	Refused entry	Expelled	Other	Total
The Philippines	3	2	8	10		23
Finland				3		3
France		1	3	1	1	6
Gabon		3		1		4
Gambia	10	2	9	21		42
Georgia	22	3	4	11		40
Ghana	7	6	12	22		47
Guinea	1	13	7	1	1	23
Guinea-Bissau	1	1		1		3
Greece			2			2
Honduras	1					1
Belarus	17	3	6	13		39
India	20	5	8	21	1	55
Iraq	48	71	23	61	1	204
Iran	81	61	5	16		163
Israel	2	1	6			9
Italy		3	3	5		11
Jamaica			1			1
Japan			1			1
Jordan	15	14		2		31
Cameroon	5	5	3	5		18
Kazakhstan	5	5	2	1		13
Kenya	3	6	2	1		12
Kyrgyzstan	12	6				18
Kosovo	66	34	4	25		129
Croatia				3		3
Latvia	5			19	1	25
Lebanon	4	14	1			19
Liberia		12	5	3		20
Libya	4	49	4	4		61
Lithuania	3		2	242	9	256
Macedonia	14		8	9		31
Malaysia				1		1
Mali	1	11	1	1		14
Morocco	10	58	53	54	5	180
Mauritania	1	2				3
Mexico	1		1			2
Moldova	4		2	4		10
Mongolia	8		4	10		22
Montenegro	3		2	5	1	11
Mosambik		1				1

## Returnees by citizenship in 2014

	Asylum	Dublin	Refused entry	Expelled	Other	Total	
Myanmar		12	1	1		14	
The Netherlands					17	1	18
Nepal	9	1	8	13		31	
Nicaragua			1			1	
Niger	1	3		1		5	
Nigeria	144	207	223	319	23	916	
Pakistan	63	24	50	118	2	257	
Paraguay			2			2	
Peru			1	2		3	
Poland	2		13	330	8	353	
Portugal	1			20		21	
Romania	4		7	438	11	460	
Russia	61	87	114	42	2	306	
Rwanda		6				6	
Saudi Arabia			1			1	
Senegal	16	6	17	14	2	55	
Serbia	71	1	16	17		105	
Serbia and Montenegro				1		1	
Sierra Leone		7	2	4		13	
Singapore		1	1			2	
Slovakia				1		1	
Slovenia				2		2	
Somalia	23	112	31	18	4	188	
Spain			2	10	1	13	
Sri Lanka	26	2	12	20		60	
Stateless	37	60	6	14		117	
United Kingdom			4	35	2	41	
Sudan	7	108	7	2		124	
Sweden				22		22	
Syria	8	100	14	4		126	
South Africa		2				2	
South Korea	1		1			2	
South Sudan		1				1	
Tajikistan		2	2			4	
Taiwan				2		2	
Tanzania	5	5				10	
Chad		7				7	
Thailand			6	2		8	
Togo	1					1	
Czech Republic			2	2		4	
Tunisia	17	42	10	14	2	85	

<b>Returnees by citizenship in 2014</b>						
	<b>Asylum</b>	<b>Dublin</b>	<b>Refused entry</b>	<b>Expelled</b>	<b>Other</b>	<b>Total</b>
Turkmenistan		1				1
Turkey	21	18	13	21	1	74
Germany			2	15		17
Uganda	17	16	1	1		35
Ukraine	21	22	9	17		69
Hungary	1			5		6
Uruguay			3			3
USA	2		5	7		14
Uzbekistan	44	3	11	6		64
Venezuela	1		1			2
Vietnam	12	6	5	28	1	52
Yemen	18	8		1		27
Zambia				1		1
Zimbabwe		1	1			2
<b>Total</b>	<b>1 804</b>	<b>1 680</b>	<b>1 076</b>	<b>2 604</b>	<b>95</b>	<b>7 259</b>

<b>Returnees by destination in 2014</b>						
	<b>Asylum</b>	<b>Dublin</b>	<b>Refused entry</b>	<b>Expelled</b>	<b>Other</b>	<b>Total</b>
Afghanistan	435		1	2		438
Albania	167		73	89	1	330
Algeria	13		1	4	1	19
Angola	15		1	1		17
Argentina			1	1		2
Armenia	19			1		20
Azerbaijan	13		2	4		19
Australia	1		2	4		7
Bangladesh	18		2	1		21
Belgium		39	5	6		50
Belize				1		1
Bosnia-Herzegovina	31		4	11		46
Brazil			3	9	1	13
Bulgaria	2	11	3	8		24
Burundi	19					19
Canada	2			2		4
Chile	1		2	7		10
People's Republic of China	2		1			3
Colombia				3		3

## Returnees by destination in 2014

	Asylum	Dublin	Refused entry	Expelled	Other	Total
Democratic Republic of the Congo (Kinshasa)	10					10
Cuba	2				3	5
Denmark		41	3		9	53
Djibouti	1					1
Egypt	9		2		5	16
Ivory Coast	1					1
Eritrea	3					3
Estonia	1	2	1		20	25
the Philippines	3			4	9	16
Finland		15	1		5	21
The United Arab Emirates	8		1			9
France	1	146	9		12	170
Gambia	10		1		3	14
Gaza Strip	7					7
Georgia	21		2		11	34
Ghana	3		1		7	11
Guinea	1					1
Guinea-Bissau	1					1
Greece	9	8	44		15	77
Honduras	1					1
Belarus	16		4		12	32
India	20				14	35
Iraq	45		2		1	48
Iran	74		1		5	80
Ireland		1				1
Iceland		1				1
Israel	3		4			7
Italy	34	523	368		605	1 564
Japan			1			1
Jordan	20				3	23
Cameroon	5				2	7
Kazakhstan	5			2	1	8
Kenya	3		2		1	6
Kyrgyzstan	12			1		13
Kosovo	74		6		23	103
Croatia					2	2
Kuwait	1					1
Cyprus		2	4			6
Latvia	6	16	1		30	54



## Returnees by destination in 2014

	Asylum	Dublin	Refused entry	Expelled	Other	Total
Lebanon	7					7
Libya	4			3		7
Lithuania	3	6	3	243	9	264
Luxembourg		2				2
Macedonia	14		9	9		32
Malaysia				1		1
Mali	1					1
Malta		39	4	1		44
Morocco	8		8	17		33
Mauritania	1					1
Mexico	1		1			2
Moldova	4		2	4		10
Mongolia	8		1	7		16
Montenegro	6		1	4		11
The Netherlands	1	30	2	18	1	52
Nepal	9		3	4		16
Niger	1					1
Nigeria	136		5	37		178
Norway			1			1
Pakistan	53		4	9		66
Paraguay			1			1
Peru				2		2
Poland	4	72	26	343	7	452
Portugal	1	13	16	26	1	57
Romania	4	10	10	442	9	475
Russia	60		121	34	2	217
Saudi Arabia			1			1
Senegal	16			4		20
Serbia	72		12	16	1	101
Sierra Leone				1		1
Singapore			1			1
Slovakia		12		2		14
Slovenia		2		2		4
Somalia	23			2		25
Spain	3	131	135	184	13	466
Sri Lanka	26			5		31
United Kingdom	2	15	11	51	3	82
Sudan	6					6
Switzerland		73	4	1		78
Sweden	1	169	56	52	2	280
South Korea	1		1			2
Tajikistan			1			1

<b>Returnees by destination in 2014</b>						
	<b>Asylum</b>	<b>Dublin</b>	<b>Refused entry</b>	<b>Expelled</b>	<b>Other</b>	<b>Total</b>
Taiwan					2	2
Tanzania	5					5
Thailand			7	2		9
Togo	1					1
Czech Republic		21	9	14		44
Tunisia	17			6	1	24
Turkey	23		15	15		53
Germany		187	10	17	2	216
Uganda	17			1		18
Ukraine	21		6	16		43
Hungary	1	41	5	23		70
USA	3		10	7		20
Uzbekistan	44		1	3		48
Venezuela	1		1			2
The West Bank	17		1	1		19
Vietnam	12		1	20	1	34
Yemen	18					18
Austria		52	4	1		57
<b>Total</b>	<b>1 804</b>	<b>1 680</b>	<b>1 076</b>	<b>2 604</b>	<b>95</b>	<b>7 259</b>